

THE PERFORMAN SOLUTION UNIX AND LINUX



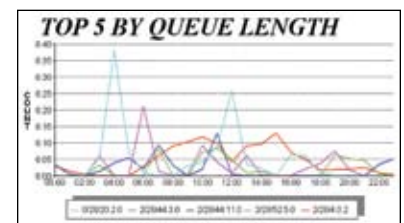
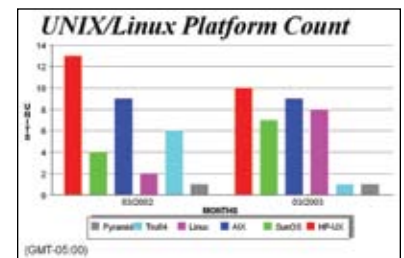
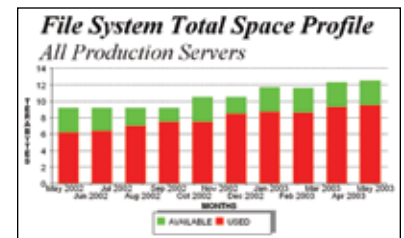
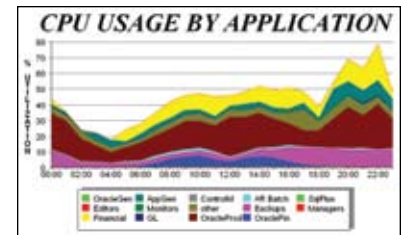
ROBUST MANAGEMENT AND PLANNING FOR TOTAL CONTROL AND VISIBILITY

RELY ON THE PERFORMAN SOLUTION FOR UNIX AND LINUX TO:

- Compile enterprise-wide UNIX and Linux performance data in a centralized data repository for comprehensive reporting and analysis.
- View graphical representations of all discovered metrics.
- Manage capacity planning to avoid bottlenecks or system vulnerabilities.
- Support performance management for AIX PowerVM.
- Allow system administrators to become proactive toward technology rather than reactive.

KEY BENEFITS OF THE PERFORMAN SOLUTION FOR UNIX AND LINUX

- Compatible with AIX, HP-UX, and Solaris, as well as, the most popular Linux distributions, including Red Hat and SUSE.
- Utilize in-depth trending and forecasting tools to take the guesswork out of tuning and purchase decisions.
- Perform enterprise-wide management regardless of platform or geographic location.
- Realize fast ROI via hardware, software licensing, and operational cost savings.
- Utilize fully automated analysis, reporting, and integrated web publishing for total control and visibility.
- Utilize advanced trending and forecasting capabilities to take the guesswork out of capacity management and operational budgeting.
- Manage multiple systems, comprising thousands of servers for a single point of control.
- Accelerate ROI with the fastest deployment and time-to-value in the industry.
- Centralize control of your entire IT infrastructure to dramatically reduce administrative overhead and eliminate human error.





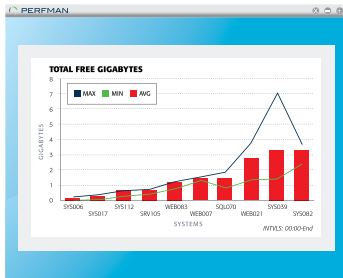
THE PERFMAN SOLUTION FOR
UNIX AND LINUX INCLUDES:

ANALYST

A Powerful Analytical and Modeling Tool

Analyst provides deep drill down analysis and accurate forecasting through an intuitive, fast and flexible interface. Analyst helps you:

- Model infrastructure changes with advanced simulation tools
- View your entire infrastructure and identify problems before they impact your users
- Perform detailed trend analysis to accurately anticipate the needs of your organization
- Identify consolidation opportunities through the virtualization candidate selection tool
- Manage the entire physical and virtual infrastructure from deployment through retirement



POINTVIEW™

An Executive Dashboard

PointView provides cross-platform visibility to the entire enterprise IT infrastructure through a single, easy-to-use interface. PointView helps you:

- Gain insight into your entire infrastructure via the web-based dashboard
- Produce sophisticated role-based reports and view resources by service, line of business, location, application, and more
- Quickly identify current and future problem areas
- Capture a snapshot of hundreds or thousands of multi-platform systems
- Compare and analyze key indicators across platforms to monitor performance



VISIBILITY

Combined with PERFMAN modules for VMware, Windows, and IBM mainframes (z/OS), PERFMAN delivers an end-to-end systems management solution that enables cross-platform modeling, management, and optimization of physical and virtual environments for total visibility.

ABOUT PERFMAN

For over 20 years, PERFMAN has been dedicated to helping our customers paint a transparent picture of their total infrastructure, analyze their environments and plan for the future.

PERFMAN was founded by innovative technology entrepreneurs with the intention of providing insight and foresight to the entire enterprise, with easy-to-use reporting and modeling tools. The legacy continues today as we continue to expand and improve upon our software solutions by aligning with our customers' requirements and emerging technologies.

We are successful, with the fastest time to deployment in the industry and 100% implementation success across hundreds of customers; we are visionaries, always staying one step ahead of technology; we are dedicated, ask any of our customers; and we are proven, with our highly-scalable, comprehensive cross-platform software solution.

Founded in 1987, PERFMAN is a privately-held company headquartered in Bethlehem, PA with offices around the world.